

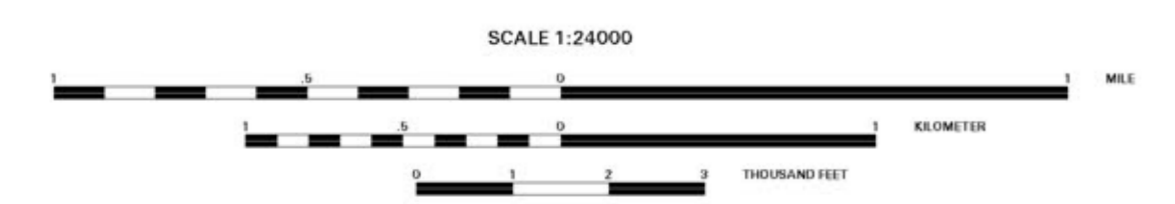
- Schistosity
 - Strike and dip of inclined schistosity
 - Strike and dip of vertical schistosity
- Gneissosity
 - Strike and dip of inclined gneissosity
 - Strike and dip of vertical gneissosity
- Brittle Features
 - Relative lateral displacement of brittle fault, U = up and D = down
 - Relative vertical displacement of brittle fault, U = up and D = down
 - Strike and dip of inclined brittle fault
 - Strike and dip of vertical brittle fault
 - Strike and dip of inclined joint
 - Strike and dip of vertical joint
- Cleavage
 - Strike and dip of inclined cleavage
 - Strike and dip of vertical cleavage
- Ductile Faults
 - Strike and dip of ductile fault

Topography modelled from USGS 7.5' DEM data
Contour Interval 100 feet
National Geodetic Vertical Datum of 1929
Digital map units in State Plane Coordinate System
National Geodetic Horizontal Datum of 1927
Roads and town boundaries from the Vermont Center for Geographic Information, Inc.

Geology mapped by Ratcliffe in 1990 and 1991,
assisted by Leon Sawyko in 1990; and by
Ratcliffe and Walsh in 1992. Digitized by
Merrifield and Walsh.

**Digital Bedrock Geologic Map of the
Mount Holly and Ludlow Quadrangles, Vermont
and Explanation of the Bedrock Geology Database in the
Vermont Geographic Information System**

By
G.J. Walsh¹, N.M. Ratcliffe¹,
J.B. Dudley², and T. Merrifield²
1994



MN N
Approximate Mean Declination
15°00' West, 1986



AUTHOR AFFILIATIONS
U.S. Geological Survey
Reston, Virginia 20192
Vermont Agency of Natural Resources,
Office of Information Management Services,
Waterbury, Vermont 05671

This report is preliminary and has not been reviewed for
conformity with U.S. Geological Survey editorial standards
(or with the North American Stratigraphic Code). Any use of
trade names is for descriptive purposes only and does not
imply endorsement by the U.S. Government.
These plates are part A and the database is part B of this
Open File Report. Both parts are available from the Vermont
Geological Survey, telephone (802) 241-3608.