

Lithic Descriptions:

Underhill Formation

CZu Silver gray-green quartz-albite-chlorite-sericite+/- magnetite schist and phyllite

Hazens Notch Formation

CZhn Gray and rusty, quartz-albite-sericite-chlorite graphitic schist with albite porphyroblasts and minor epidote, calcite, garnet, biotite and sphene; medium-grained, massive, light gray and green banded quartz-albite-muscovite gneiss with minor epidote, chlorite, sphene, and magnetite

Fayston Formation

CZf Silvery green, medium grained, muscovite-quartz-albite-chlorite-garnet-magnetite schist with thin light gray quartzites

Ultramafic rocks

u, tc massive, brown to white weathering, green, partially to completely serpentinized dunite and peridotite (u); talc-carbonate rock, quartz-carbonate rock, and steatite (tc)

Ottawaquechee Formation

Co Rusty weathering dark gray to black carbonaceous pyritiferous phyllites with subordinate lithologies that include silvery gray and grayish-green phyllites, gray, fine to medium-grained, granular quartzites.

Jay Peak Formation

Cj Fine-grained, light gray-green quartz-chlorite-albite phyllitic schist and quartzite; white quartzofeldspathic layers alternate with green chloritic phyllitic layers.

References:

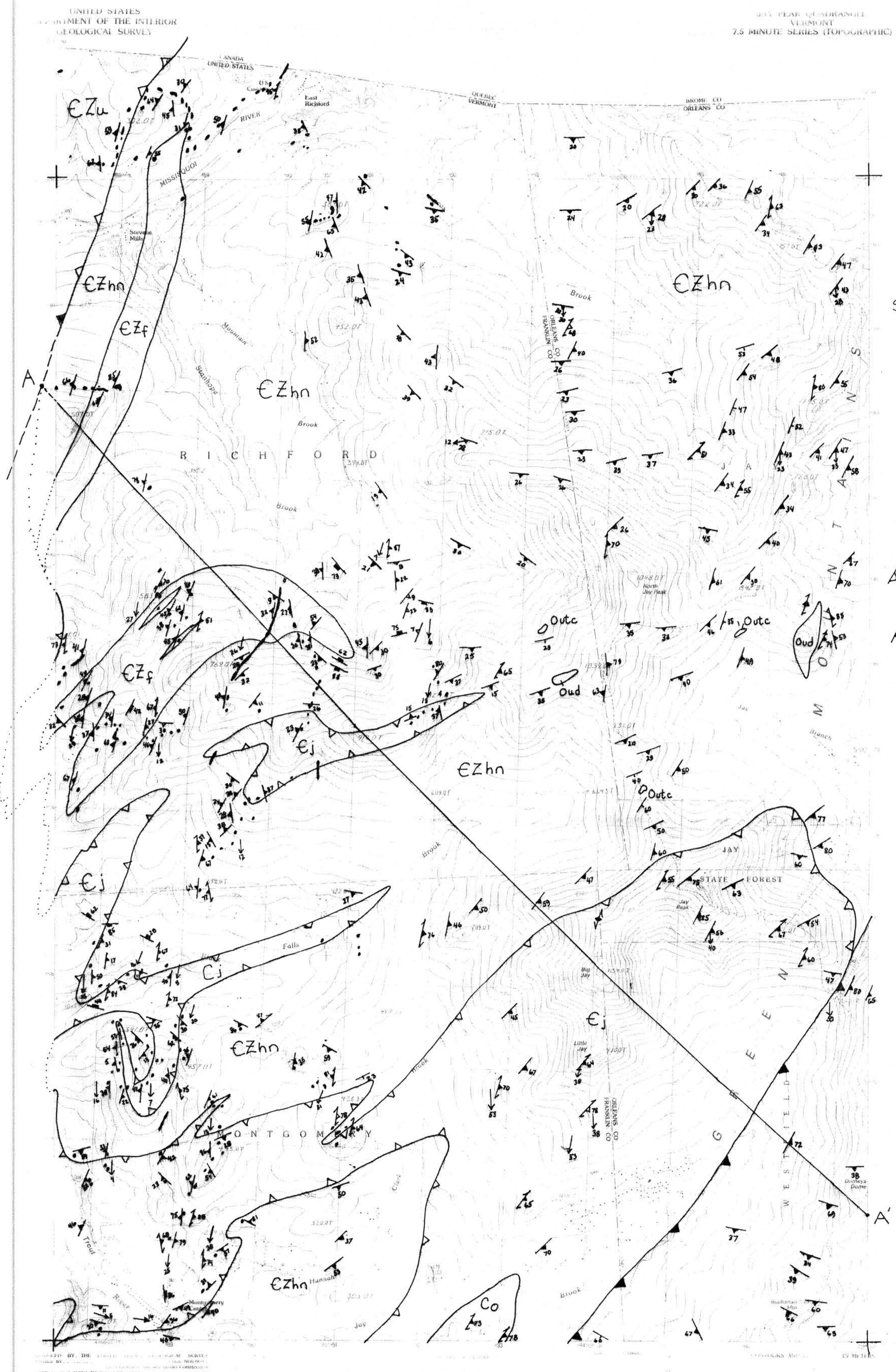
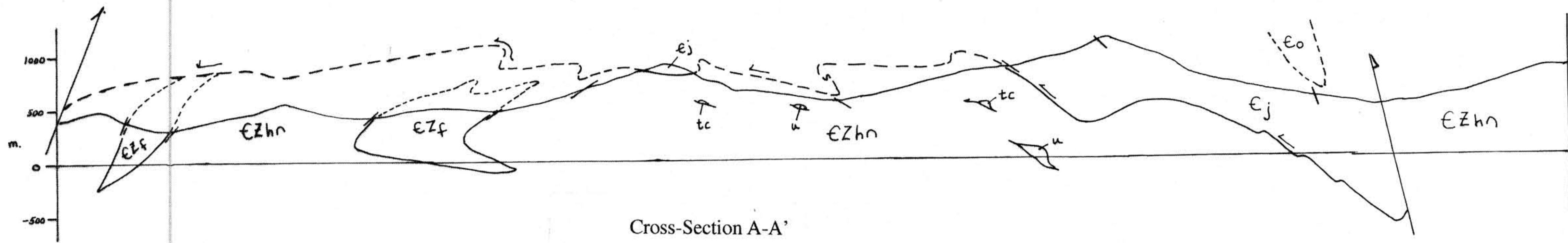
Cady, W.M., Albee, A.L., and Chidester, A.H., 1963, *Bedrock geology and asbestos deposits of the upper Missisquoi Valley and Vicinity, Vermont*. U. S. Geological Survey Bulletin 1122-B, Contributions to Economic Geology, 78 p.

Doll, C.G., Cady, W.M., Thompson, J.B., Jr., and Billings, M.P., 1961, *Centennial geologic map of Vermont*: Vermont Geological Survey, scale 1:250000.

Schoonmaker, A., 1997, *Geology of the Western Third of the Jay Peak Quadrangle, Vermont*: map on file with the Vermont Geological Survey.

JAY PEAK 7.5 MINUTE QUADRANGLE

Credits: Adam Schoonmaker (western half)
Cady, Albee and Chidester, 1963 (eastern half)
Barry Doolan, NW corner and compilation.



- STRUCTURE SYMBOLS
- fracture
 - bedding
 - dominant foliation (S₂; S₁)
 - crenulation cleavage; space cleavage (S₃; S₁+1)
 - F₃ fold hinge
 - early D₂ fault; teeth on upper plate
 - late D₂ fault; teeth on upper plate

UNITED STATES DEPARTMENT OF THE INTERIOR GEOLOGICAL SURVEY

JAY PEAK 7.5 MINUTE QUADRANGLE VERMONT 7.5 MINUTE SERIES (TOPOGRAPHIC)

PROVISIONAL MAP
Produced from original manuscript drawings. Information shown as of date of photography.

CONTOUR INTERVAL & METERS
CONTOUR AND FIELD ESTABLISHED ELEVATIONS SHOWN TO THE NEAREST 5 METER
OTHER ELEVATIONS SHOWN TO THE NEAREST 0.5 METER
By contour lines to the nearest 10 METERS
To contour lines to the nearest 0.5 METERS
THIS MAP COMPILES WITH NATIONAL MAP ACCURACY STANDARDS FOR SALE BY U. S. GEOLOGICAL SURVEY
DENVER, COLORADO 80225, OR RESTON, VIRGINIA 22092

JAY PEAK, VERMONT
PROVISIONAL EDITION 1986
44072-115-114-024