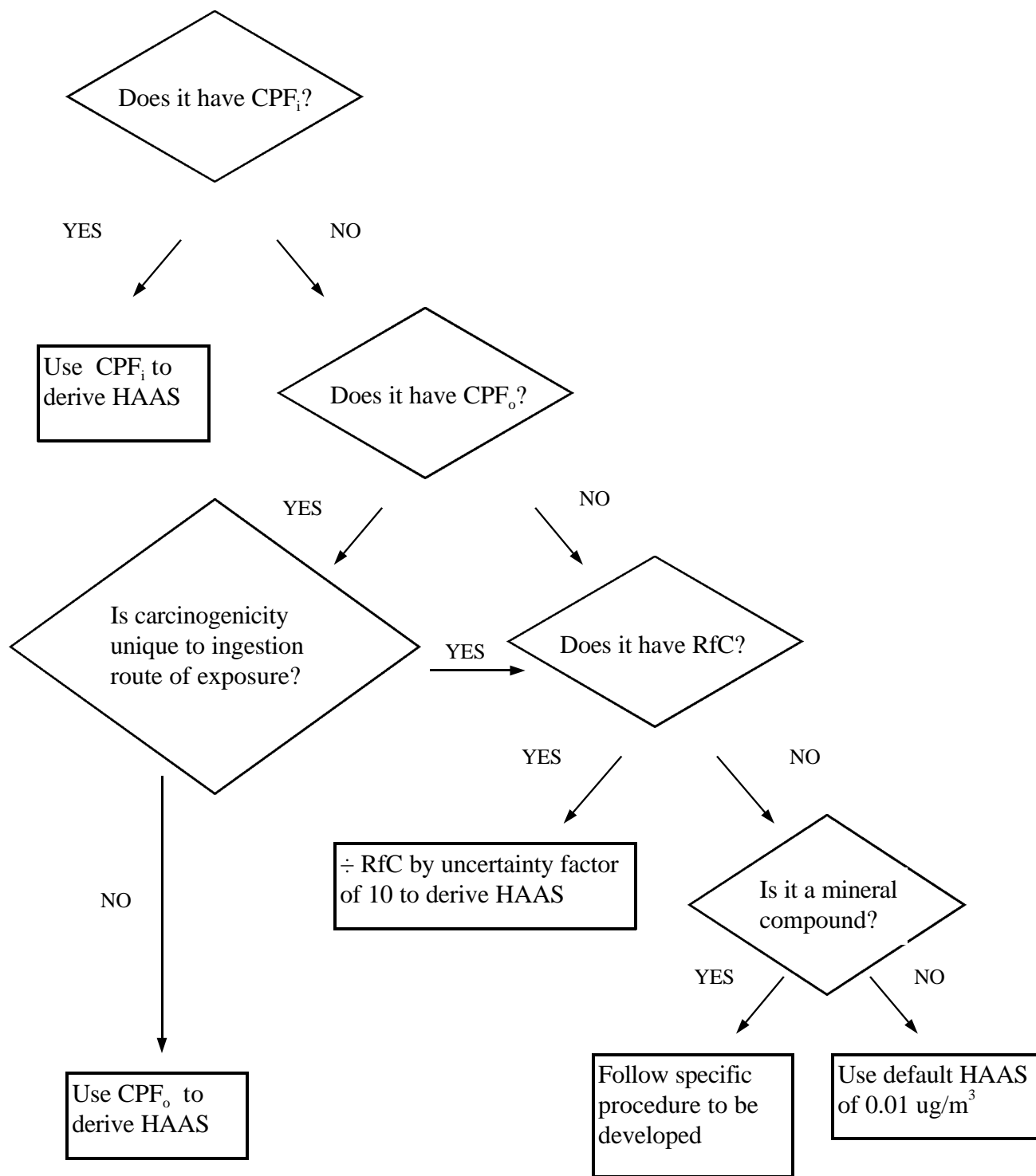


## Methodology for Deriving Hazardous Ambient Air Standards for Category I Compounds



$CPF_i$  = Inhalation Cancer Potency Factor  
 $CPF_o$  = Oral Cancer Potency Factor  
 RfC = Inhalation Reference Concentration  
 HAAS = Hazardous Ambient Air Standards

Figure 2.1 - See Section II.B.2.