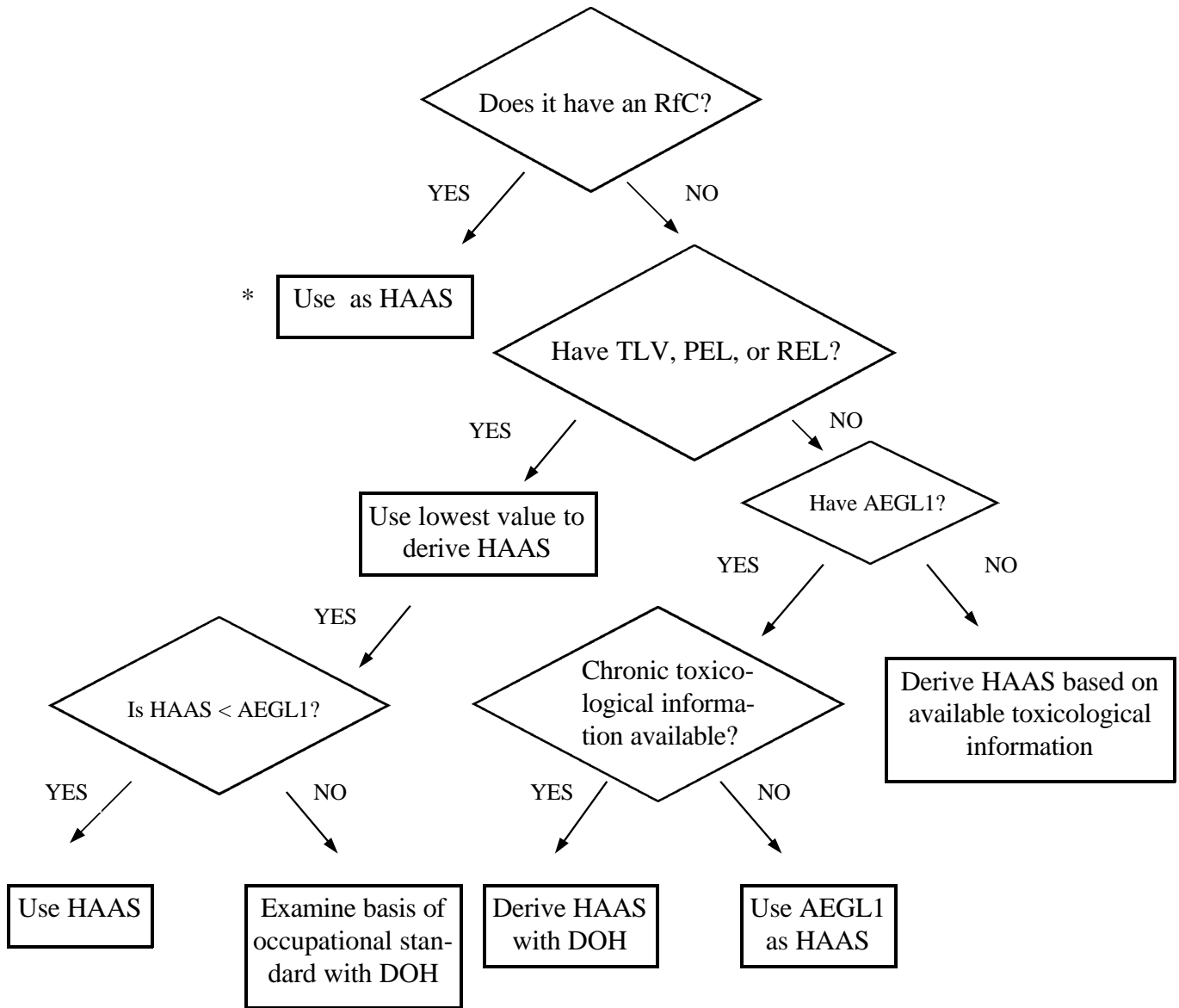


Methodology for Deriving Hazardous Ambient Air Standards for Category III Compounds



* Caveat: Use additional uncertainty factor of 10 if ACGIH A1, A2, A3; or if NIOSH Potential Occupational Carcinogen.

RfC = Inhalation Reference Concentration
 HAAS = Hazardous Ambient Air Standard
 TLV = Threshold Limit Value
 PEL = Permissible Exposure Limit
 REL = Recommended Exposure Limit
 AEGL1 = Acute Exposure Guideline Level 1, greatest time available

Figure 2.3 - See Section II.C.2