

## Solid Waste Reduction and Management

Waste Management Division

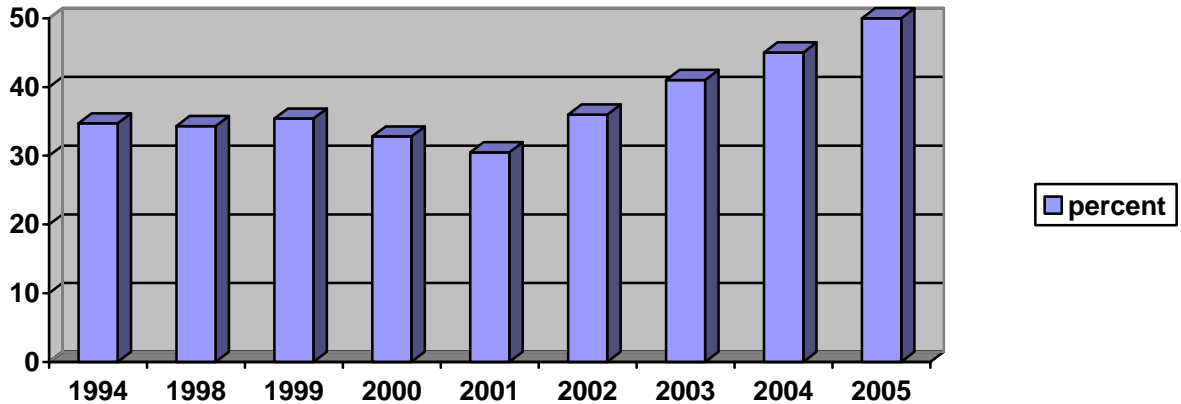
August 8, 2003

### Results

Reduction in the amount of waste disposed per capita in VT, an increase in the amount and types of materials reused and recycled before disposal, and safe and efficient management of solid waste in accordance with State Rules and Law.

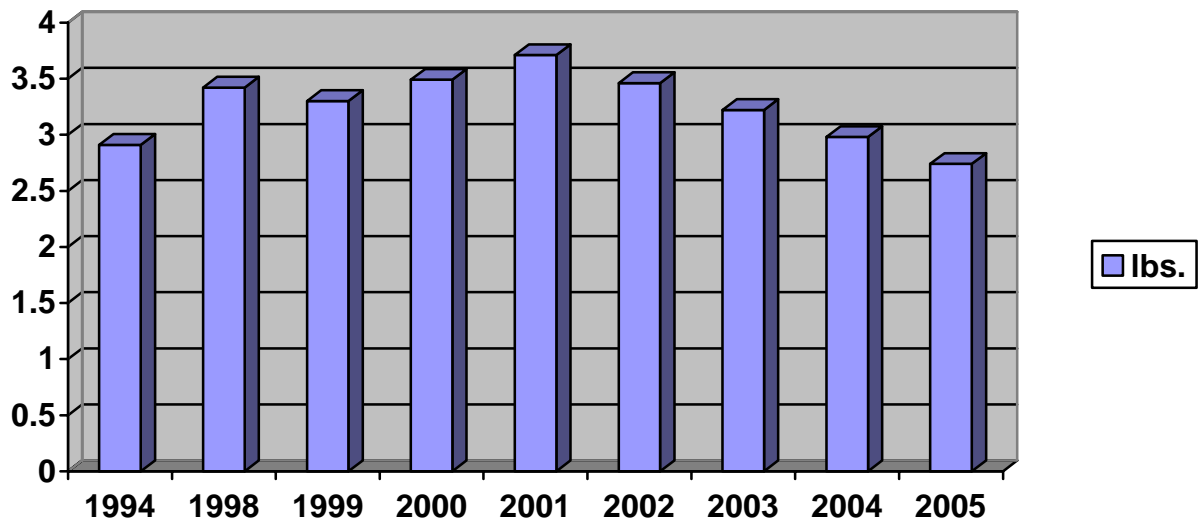
### Key Indicators:

1. Solid waste diversion rate for VT



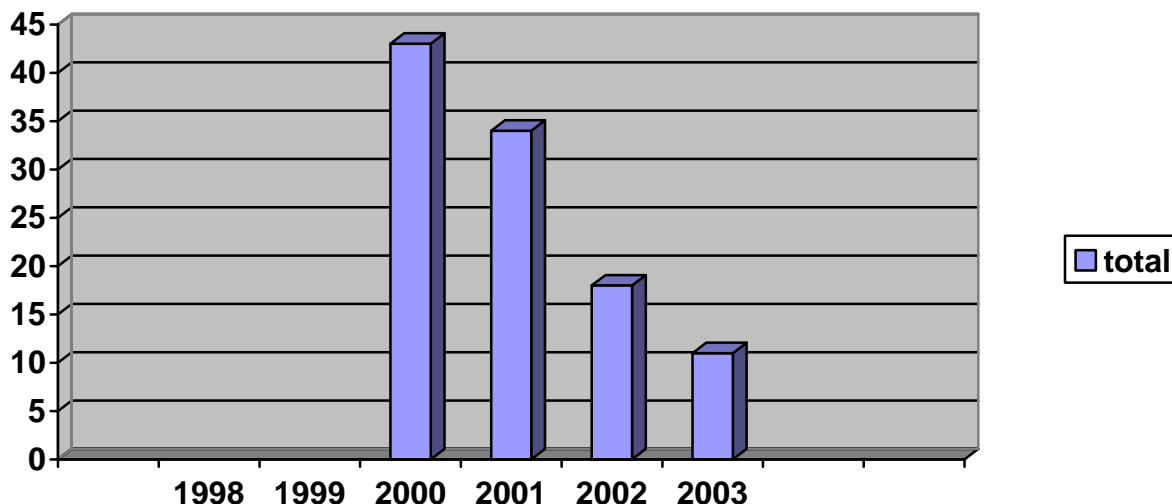
NOTE: 2002-2005 are projections

2. Per capita disposal rate for VT (pounds/person/day).



NOTE: 2002-2005 are projections

3. # of facilities known to be operating without certification.



**Story Behind Baseline Performance**

Waste generation and disposal has increased steadily in VT, parallel to national trends. Disposal is the lowest rung on the waste management hierarchy and results in the loss of many reusable and recyclable materials, and requires valuable land be used for landfills. Waste reduction and recycling efforts (including composting) over the past thirty years have resulted in a current diversion rate in VT of approximately 31% (2001). Vermont has a goal of 50% diversion by 2005 (outlined in the recently adopted State Solid Waste Plan) which will require an investment of time and financial resources to achieve. The immediate actions are to focus on waste generated from the commercial sector as well as organic waste.

The number of operating facilities and haulers that have obtained the proper certifications has increased steadily over the years. This “leveling of the playing field” ensures that all facilities are playing by the same rules and are not causing undue impact to the environment.

**Strategies**

The ways in which we accomplish our desired results include:

Regulation, Compliance Assistance, and Enforcement - Regulatory activities since the passage of Act 78 have been to ensure that facilities and haulers manage waste safely so that waste constituents do not enter the air, surface water, or ground water, and do not create a nuisance. Permitting, compliance and enforcement strategies have been utilized as necessary to achieve this goal. Regulatory oversight of “closed” landfills have also been implemented so as to prevent any long term impact from these waste disposal sites. State responsibilities related to the Bottle Bill are also implemented to ensure prevention of litter and recycling.

Performance Measure	“P”=Projected and A”=Actual Values	1996	1997	1998	1999	2000	2001	2002	2003	2004	2005	2006
# of SW Certifications and amendments issued	P	-	-	60+	60+	45+	50+	50+	50+	55		
	A	-	43	40	51	41	53	69	61			
# of applications active at end of year	P	-	-	-	-	-	-	-	-	13		
	A	-	60	63	48	53	65	44	43			
Certification Sum of PEP’s	P	-	-	-	100%	100%	100%	100%	100%	100%		
	A	-	48 %	56 %	38%	80%	62%	45%	?			
# of hauler licenses issued	P	-	all	all	all	all	all	all	all	all		
	A	-	194	247	212	185	176	229				
# of operating unlined landfills	P	-	-	-	-	-	-	-	-	3	2	2
	A	4	4	4	3	3	3	3	3	-	-	-

Grants and Loans – The Waste Management Division and the Environmental Assistance Division award approximately \$ 533,000 in grants to various public and private entities for waste reduction and pollution prevention activities. This includes grants to educational groups, solid waste management districts, reuse organizations and businesses, and others to develop programs, business infrastructure, or implement studies or educational activities. The projects include consumer and youth education, projects to increase the diversion of construction and demolition debris and organic wastes, prevention of illegal disposal projects, and grants to districts and municipalities for collection of household hazardous wastes. Recently grants were also awarded to assist districts and municipalities in the creation of updated local solid waste management plans.

The Division also implements a capital grants program for waste reduction and recycling projects. At the start of FY03 there were 23 active grants totaling approximately \$490,763.

	1996	1997	1998	1999	2000	2001	2002	2003	2004	2005	2006
# of new capital grant awards and amendments	P		-	-	-	-	-				
	A		41	8	7	8	7				
# of capital grant award payments	P		-	-	-	-	-				
	A		65	47	38	26	14				

Education and Technical Assistance – The Division maintains a toll-free telephone number for recycling and reuse questions (800-932-7100). We offer training to other State agencies on recycling in State Buildings. We chair the Clean State Council, an organization that promotes waste reduction, reuse, and recycling across State Government. We also work or serve on the board (ex officio) of organizations promoting or conducting waste reduction activities (Association of VT Recyclers, Compost Association of VT, GreenUp Vermont). We promote waste reduction, composting, recycling at special events such as VT Recycles Day, Green-Up Day, Composting Week etc. We also assist towns and districts in creating local strategies to prevent the illegal dumping or burning of solid waste in their communities.

Policy and Planning- To further the waste management goals identified in statute the Division also implements various policy and planning initiatives. In addition to tracking all solid waste related bills, we develop and update rules, policies and procedures relating to solid waste management. (Including things such as regulation of facilities, medical waste management, management of animal carcasses, sw permit fees and taxes, acceptable uses of solid wastes, etc.). We also collect and analyze data on an annual basis relating to waste composition, MSW Diversion rate, and destination and

amounts of solid waste being disposed of. State law also mandates the creation and updating of the State Solid Waste Plan which includes state approval of local solid waste implementation plans.

**Proposed Performance Improvements**

Grants and Loans – award approximately \$530,000 in grants in FY 04, \$550,000 in FY 05, and \$600,000 in FY 06. Grants will address specific sectors of waste generators or materials identified as problematic (through waste characterization studies, national or regional information etc).

Education and Technical Assistance - Target education at commercial waste generators and students.